

Busy bees

Build a bee water station!

Bits & bobs you need

pebbles and rocks

plastic tub

water

1

Choose a bee-friendly spot outdoors to build your water station

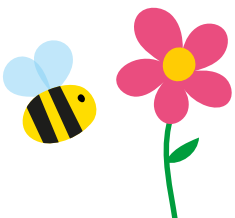
2

Fill your plastic tub with pebbles, then pour water over the top (the pebbles give bees something to stand on when they sip)

3

Watch the busy bees as they buzz around your watering hole - can you count how many you see?

A busy bee can visit 2000 flowers a day - thirsty work!



BEAR's Outdoor Alphabet
bearnibbles.co.uk

